

APPLITRON 654BKC

GRADUAZIONE TRANSFER DIGITALE SU MATERIALI PLASTICI
GRADUATI E VOLUMETRICI

*TRANSFER DIGITAL GRADUATION ON GRADUATED
AND VOLUMETRIC PLASTICWARE*

Macchina da stampa per applicare, mediante processo termo TRANSFER, graduazioni prestampate digitali a Toner direttamente su contenitori per laboratorio in plastica quali cilindri graduati piccoli e grandi, becher e tronco conici come caraffe anche col manico. Graduazioni e LOGO stampati anche su plastica in rilievo e su più sezioni del contenitore stesso. La macchina APPLITRON 654BKC è un applicatore transfer con ciclo di stampa automatico e carico/- scarico del pezzo manuale.

Printing machine for applying, through thermo TRANSFER process, pre-printed digital graduations with Toner directly on plastic laboratory containers such as small and large graduated cylinders, beakers and truncated cones such as jugs even with handles. Graduations and LOGOS also printed on embossed plastic and on multiple sections of the material itself. The APPLITRON 654BKC machine is a transfer applicator with automatic printing cycle and manual loading/unloading of the piece.

La tecnologia TRANSFER DIGITALE permette di gestire flussi di lavoro flessibili che consentono passare senza interruzioni da un prodotto ad un altro in tempi rapidi, in modo semplice ed efficiente ottimizzando la produzione.

DIGITAL TRANSFER technology allows you to manage flexible workflows that allow you to switch seamlessly from one product to another quickly, easily and efficiently, optimizing production.



ARTICOLI IN PLASTICA GRADUATI E VOLUMETRICI



GRADUATED AND VOLUMETRIC PLASTICWARE

MASSIMA FLESSIBILITÀ

cilindri graduati da 10mlt a 1000ml, becher calibrati da 25mlt a 5lt, caraffe forma lunga con manico adatte per alimenti.

MAX FLEXIBILITY

graduation shape cylinders from 10mlt to 1000ml, calibrated beakers from 25mlt to 5lt, jugs long form with handle suitable for foodstuff.

APPLITRON 654BKC

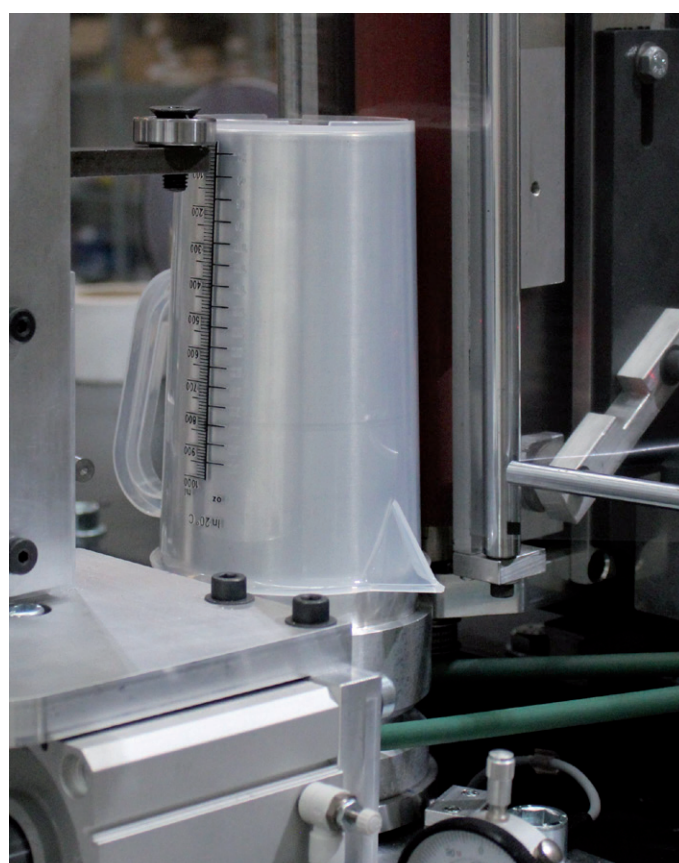
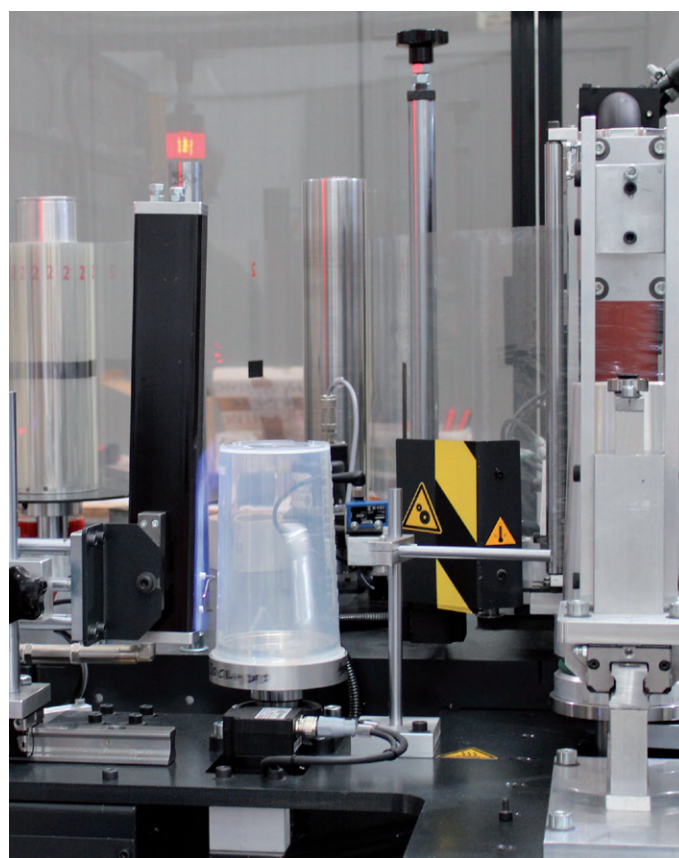
MACCHINA PER STAMPA TRANSFER DIGITALE A TONER PER LA GRADUAZIONE DI ARTICOLI PLASTICI DA LABORATORIO BECHER, CILINDRI GRADUATI, CARAFFE

NEWS!

STAMPA GRADUATA SU SCRITTA IN RILIEVO SEMPLICE E RAPIDO CAMBIO FORMATO

CARATTERISTICHE TECNICHE APPLITRON 654-BKC

Caratteristiche della decorazione	Immagini Digitali stampate con stampanti laser, toner polimerico secco in quadricromia (C-M-Y-K) Stampa anche su graduaione in rilievo
Caratteristiche stampa	Trasferimento termo-meccanico
Forma dei contenitori	Cilindrici a base circolare Tronco conico a base circolare (CARAFFE)
Materiale plastico	PP (polipropilene) - PMP/TPX (polimetilpentene)
Caratteristiche dei contenitori	BECHER Min diam est=34mm Max diam. est.=190mm Min altezza=49mm Max altezza=228mm CILINDRI GRADUATI Min diam est=13,5mm Max diam. est.=66mm Min altezza=139mm Max altezza=439mm CARAFFE CON MANICO Tolleranza su qualsiasi misura $\pm 0,5\text{mm}$
Ciclo di lavoro	Automatico Controllo di ciclo mediante PLC SIEMENS S7 1200 Carico-scarico manuale
Trattamento di pre-stampa	0,3lt-30lt
Condizioni ambientali	Temperatura: min 15° C- max 38° C Umidità relativa: min 30% max 70% Massima polverosità ambiente 0,15mg/m ³
Alimentazione elettrica	380-400Vac 50/60Hz
Allacciamento	13kW, 18A/ fase, 3fasi+neutro+terra
Consumo	10kW
Aria compressa	6atm no-water, no-oil, 300nl/min ⁻¹
GAS	GPL, METANO, GAS NATURALE pressione 0,5atm
Rumore	<70dB(A)
PESO	850Kg

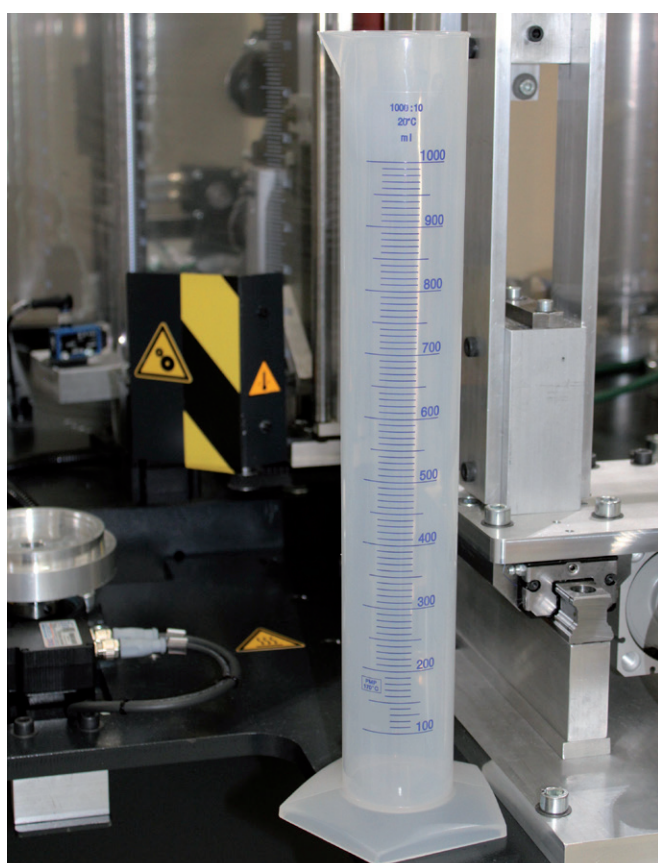
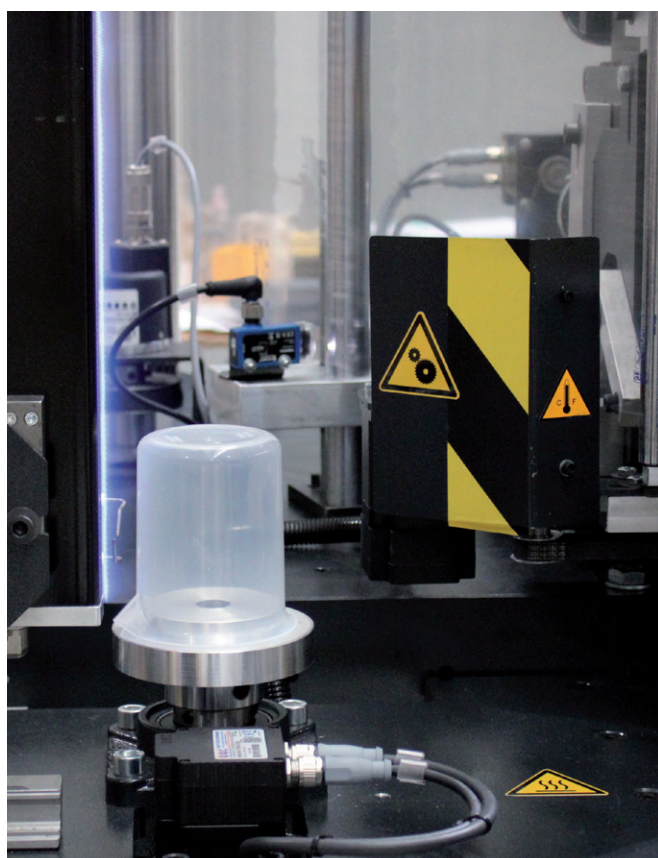


Dati soggetti a variazione senza preavviso

H.D.T.System

HEAT DIGITAL TRANSFER

Metod and device patented by GMC



DIGITAL TONER TRANSFER PRINTING MACHINE FOR GRADUATION OF LABWARE PLASTIC ITEMS BEAKERS, GRADUATED CYLINDERS, JUGS

NEWS!

GRADUATED PRINTING ON RAISED WRITING SIMPLE AND QUICK
FORMAT CHANGE

TECHNICAL FEATURES APPLITRON 654-BKC

Decoration characteristics	Decoration characteristics Digital images printed with laser printers, four-colour dry polymer toner (C-M-Y-K) Also prints on embossed graduation
Printing characteristics	Thermo-mechanical transfer
Shape of containers	Cylindrical with a circular base Conical trunk with circular base (JUGS)
Plastic material PP	PP (polypropylene) - PMP/TPX (polymethylpentene)
Characteristics of containers	Beaker Min ext diam=34mm Max diam. ext.=190mm Min height=49mm Max height=228mm GRADUATED CYLINDERS Min ext diam=13.5mm Max diam. est.=66mm Min height=139mm Max height=439mm JUGS with handle Tolerance on any measurement ± 0.5 mm
Working cycle	Automatic Cycle control by PLC SIEMENS S7 1200 Manual loading-unloading
Pre-press treatment	0,3lt-30lt
Environmental conditions	Temperature: min 15° C - max 38° C Relative humidity: min 30% max 70% Massima polverosità ambiente 0,15mg/m ³
Power supply Connection Consumption	380-400Vac 50/60Hz 13kW, 18A/phase, 3phases+neutral+earth 10kW
Compressed air	6atm no-water, no-oil, 300nl/min-1
Gas	LPG, METHANE, NATURAL GAS pressure 0.5 atm
Noise	<70dB(A)
Weight	850Kg

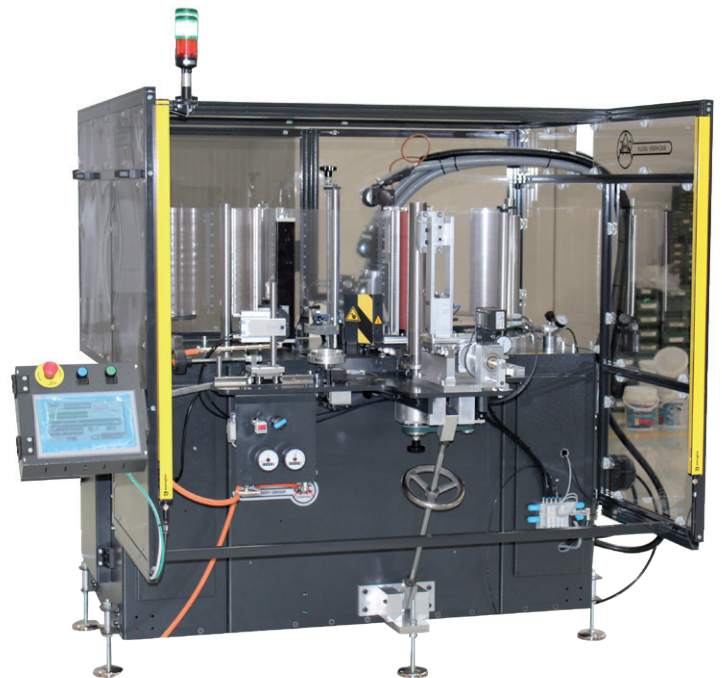
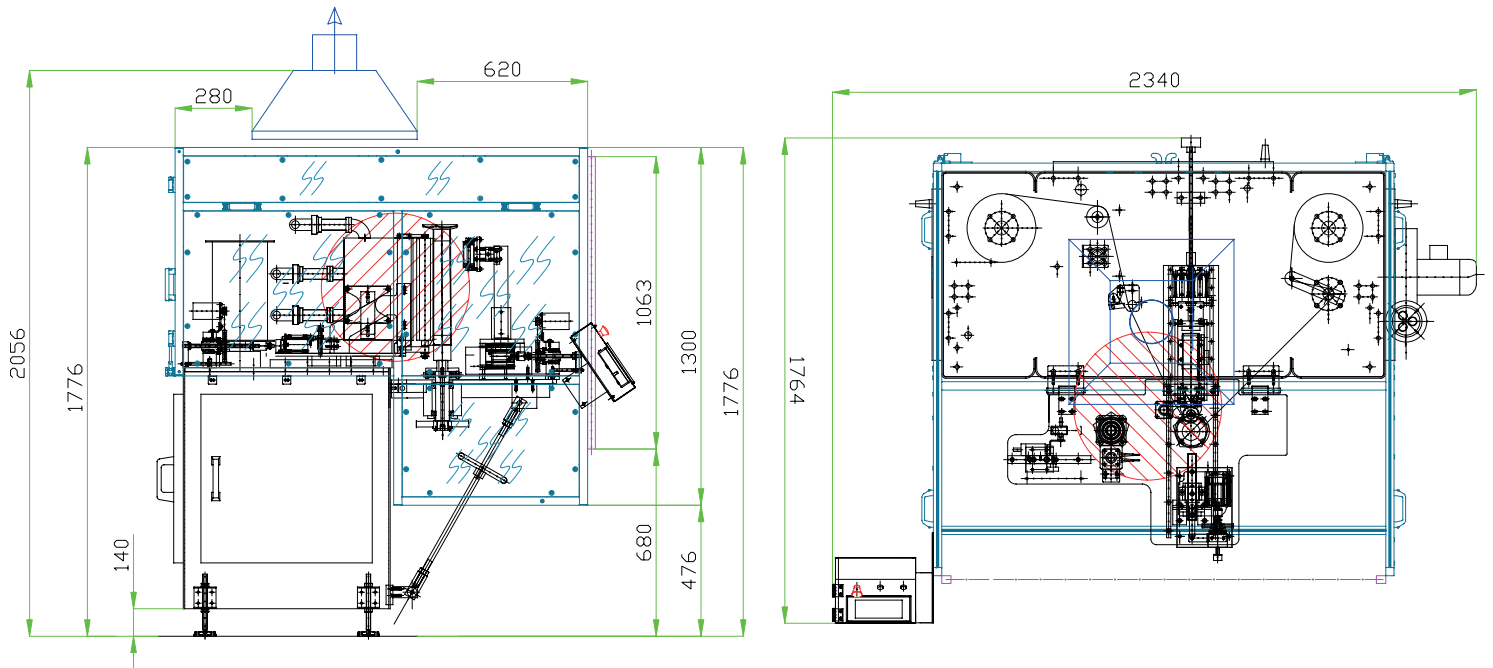
Data subject to change without notice



APPLITRON 654BKC

APPLITRON 654BKC

LAYOUT DIMENSIONI MACCHINA



Il costruttore si riserva senza preavviso e in qualsiasi momento ogni modifica ritenuta opportuna per il miglioramento della propria produzione.
The manufacturer reserves the right without notice and at any time any changes deemed appropriate for the improvement of its products.



VIA DELLE NAZIONI, 77 41122 MODENA (ITALY)
Tel. +39 059 450830 - sale@sgmcprinting.com
www.gmcprinting.com